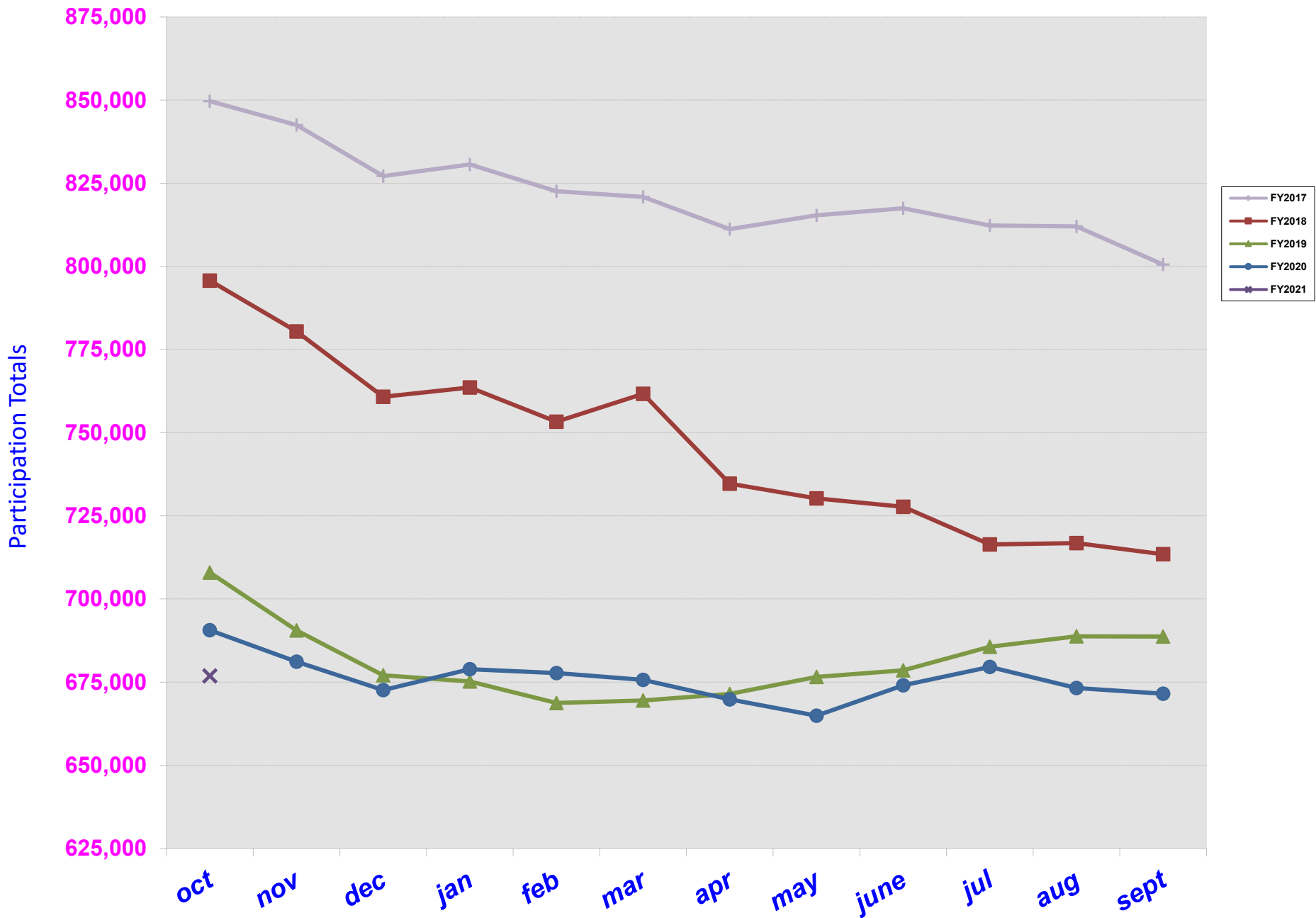


# WIC PARTICIPATION HISTORY



Participation Data Summary

Rev: 11/9/20

Table with columns for fiscal year (FY2021, FY2020, FY2019, FY2018, FY2017) and months (oct, nov, dec, jan, feb, mar, apr, may, june, jul, aug, sept) plus a ytd total column. Rows include categories like 8. a. Woman Preg., 9. a. Infants Fully BF, and 11. Total Participation.